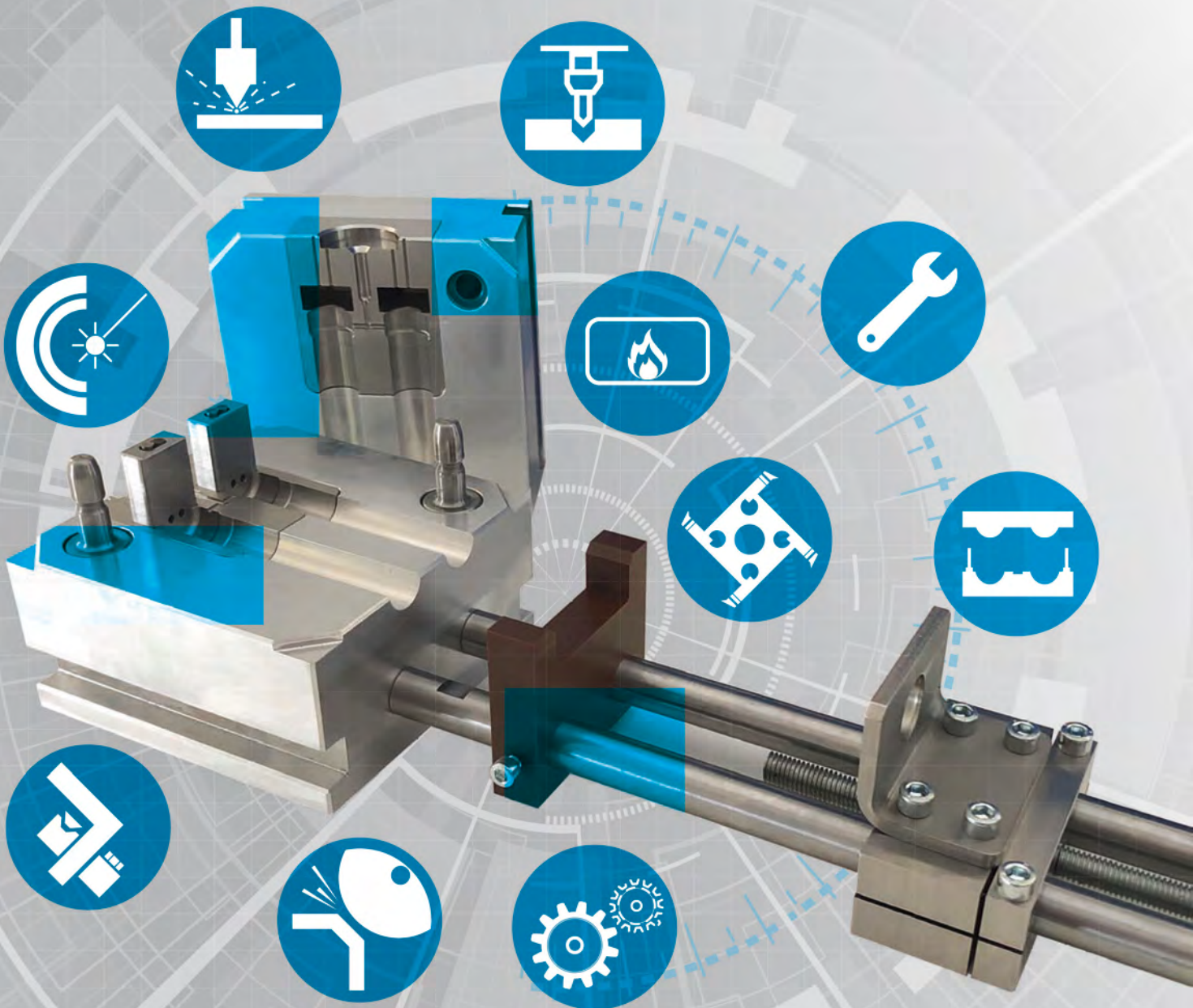




QUALITY PRODUCTION PLANNING





Introduction

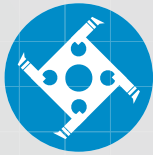
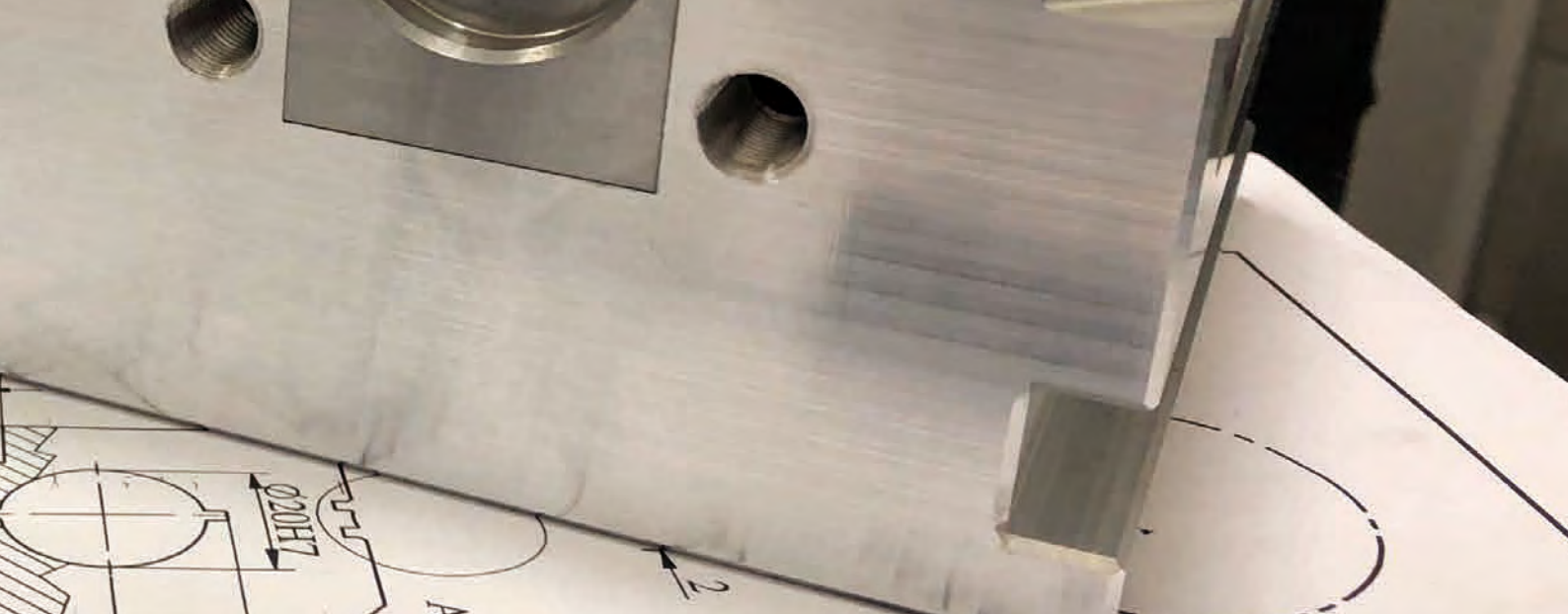
**“For us complicated equals interesting,
and impossible equals challenging.”**

Our company, Q.P.P. (Quality Production & Planning) Hungary Kft. was established in 2013 with a view to becoming part of the industrial manufacturing market as a manufacturer providing comprehensive services. In this capacity we aim to perform complex tasks which require the stable and reliable operation of multiple technologies concurrently. Apart from providing contract machining, we aim to be a key player in the industry through the development of technical and technological processes, through the provision of complex solutions, through maintaining continuous contact with our customers, through offering quick services, as well as through responding flexibly and with special expertise to resolve our customers' problems. To this end, since the launch of the company we have aimed to fulfil our partners' orders ourselves, under one roof from design through implementation. We provide continuous training to our colleagues, technicians and engineers. We aim to be a preferred partner for our customers 99% of whom are large multinational companies. Therefore, we ensure software maintenance, purchase the newest and latest CAD/CAM programmes and renew our pool of tools on a regular basis. Our colleagues visit our customers without charging a callout fee to clarify new projects and technical issues, if needed, within merely 24 hours. For us the customer always comes first!

We work on a floor area of 2,000 m² on thirty pieces of machining equipment, in two shifts. We manage all incoming projects from the quotation stage to delivery in a corporate management system, and record them according to ISO standards.

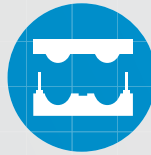
Dávid Szabó

Managing director/Mechanical Engineer
Q.P.P. Hungary Kft.



CONTRACT MACHINING:

We perform contract machining for many partners, including **VALEO, SIEMENS, BOSCH, GUARDIAN, HOBRE, HEI** and **LIGHTTECH**. Our pool of machinery consists of around thirty machining tools, and we have significant capacity to meet mass production, one-off or small series orders. For our regular customers we take urgent orders, keep goods in stock and deliver within 24 hours.



TOOL MANUFACTURING:

We take orders for the design and full-scale implementation of instruments and tools and their measurement in our metrology lab or on the customers' premises up to lengths of 2.5 m. We maintain and restore worn or damaged tools, provide replacement parts by means of electric discharge machining, or manufacture new workpiece holding inserts.



MACHINE MANUFACTURING:

Designing and manufacturing special PLC controlled tools with complex mechanic and electronic components even on the basis of one-off orders, but optimised for series production. We undertake to restore, refurbish and redesign existing machinery.

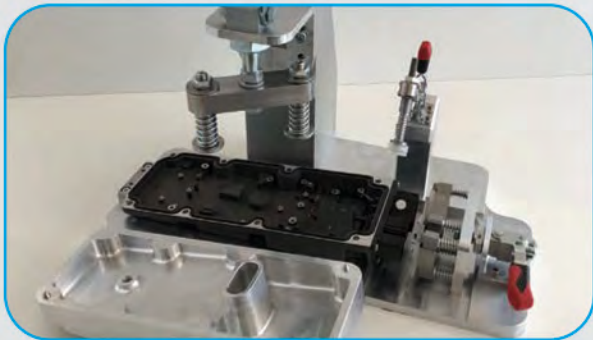


Contract machining

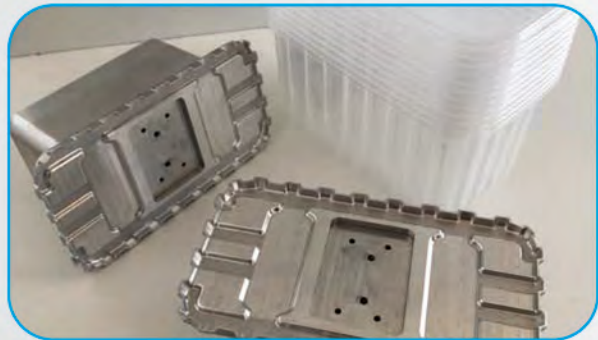
**“We are not the largest provider,
nor do we want to be the largest,
but we definitely want to be considered
to be one of the best!”**

In addition to tool and machine manufacturing we use a considerable part of our capacity for contract machining in two shifts, providing full-scale implementation (including heat and surface treatment). As many as 99% of our customers are global large companies for which our yearly deliveries range from one-off orders to ten thousand units in Europe. Tool manufacturing is based on technical specifications or sample units, and we aim to fully satisfy the customers' needs. To this end, we include, track and check all steps of the process. Incoming orders are recorded in a corporate management system. Production is coordinated on a continuous basis, completed orders are tested in the metrology lab before they are packaged and labelled. Orders are delivered to the customers as required. For our regular customers we take urgent orders and deliver within 24 hours from the quotation stage, if necessary.

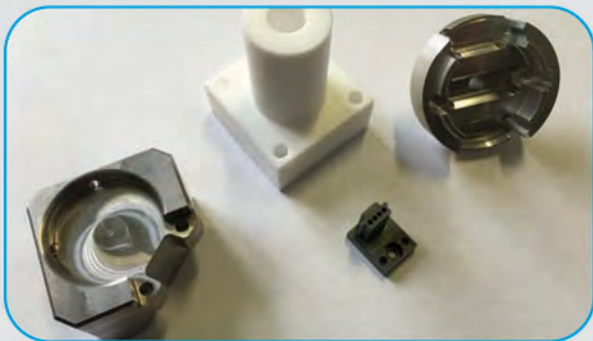
- **High milling capacity**
- **Precision machining**
- **Versatile services**
- **Availability around the clock**



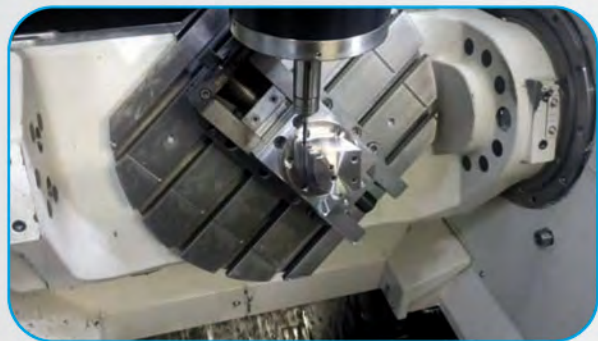
One-off devices/machines



Vacuum forming tools



Precision components and tools



Simultaneous 5-axis machining



Series manufacturing



Manufacturing of new gears based on sample gears



Tool and equipment manufacturing

Full-scale implementation from design to manufacturing.

We take orders for the manufacturing of tools, including punching, crushing, vacuum forming or injection moulding tools from the design phase to implementation even without technical specifications, based on sample units or new ideas. We provide comprehensive services that include mechanical components, welding, heat treatment and assembly as well. Manufacturing of measuring devices and control templates with individual workstations and lighting. We maintain and restore worn or damaged tools, provide replacement parts by means of electric discharge machining, or manufacture new workpiece holding inserts. We provide full-scale implementation in our milling plant, as well as in our grinding, locksmith and assembly units. Our metrology lab is equipped with a 7-axis measuring arm with a working volume of 2.5 m, which allows for the measurement (even on-site measurement) of large pieces of equipment.

Tool design and manufacturing:



Manufacturing of hydraulic crushing tools for crushing aluminium clamps



Manufacturing of electrode equipment: equipment produced for automotive industry plants for forming and processing various upholstery elements



Manufacturing of moulding forms and equipment: for the food, electronic and automotive industry, both for vacuum forming and injection moulding



Automotive upholstery checking workstations:



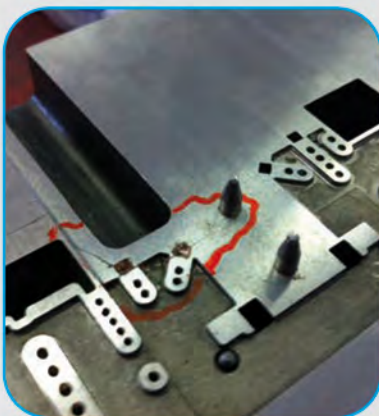
Installation of quality control workstations, ergonomic design and manufacturing of the workstations based on the product model, fulfilling customers' demands, i.e. mounting and on-site installation of light fixtures.

Renovation and development of extruder tools:

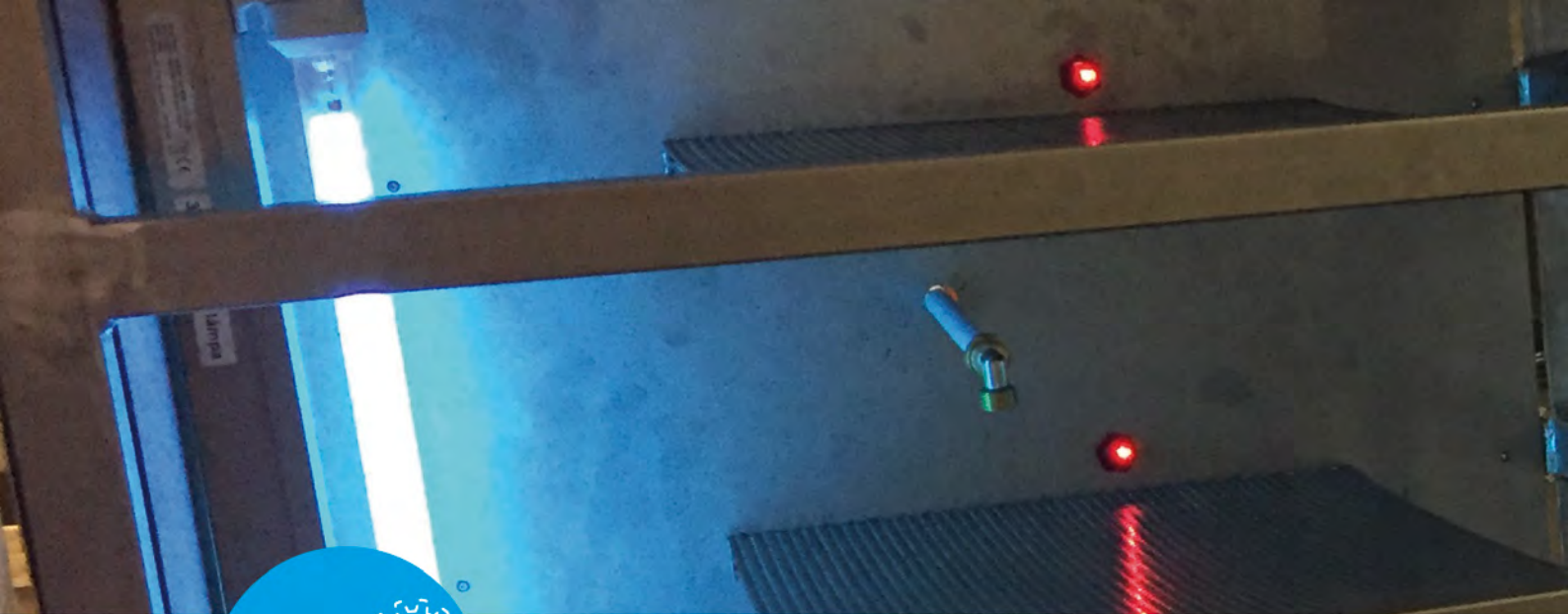


Maintenance and renovation of extruders unused for a long time, replacement of worn components, manufacturing of new components, increasing the tensile force of yokes clamping the flanges, plus designing secure attachments

Repairing the tool components of special machinery:



Removal of cracked or damaged parts of cutting and punching tools by means of electric discharge machining, manufacturing and adjustment of new, high precision inserts. Laser welding of worn cutting edges.



Machine manufacturing

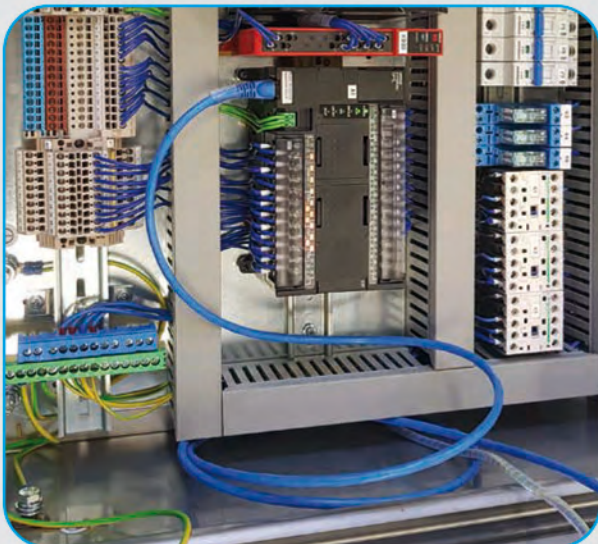
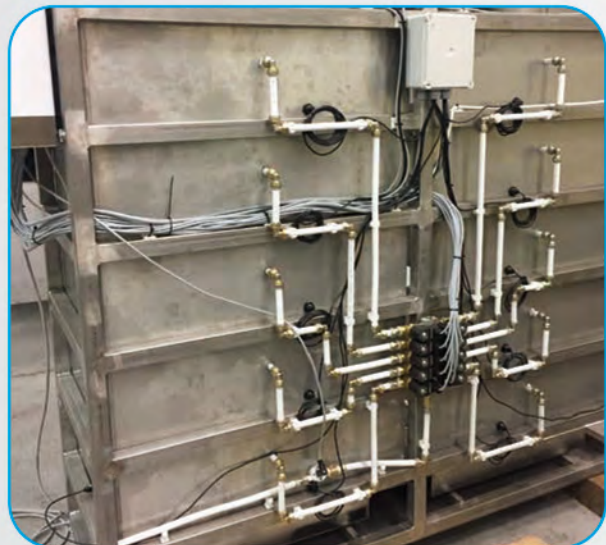
**Tell us what you need,
we will design and manufacture it.**

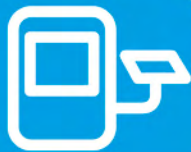
Design and manufacturing of complete machinery, ranging from one-off or series manufactured special tools or production lines. Our company carries out the entire implementation process under one roof, with the involvement of colleagues specialised in the fields concerned (from CNC technicians through mechanical engineers to PLC programmers). In addition to manufacturing machines, our service team also undertakes the servicing, repair and conversion of other pieces of machinery, either on the customers' premises or in our own plant.





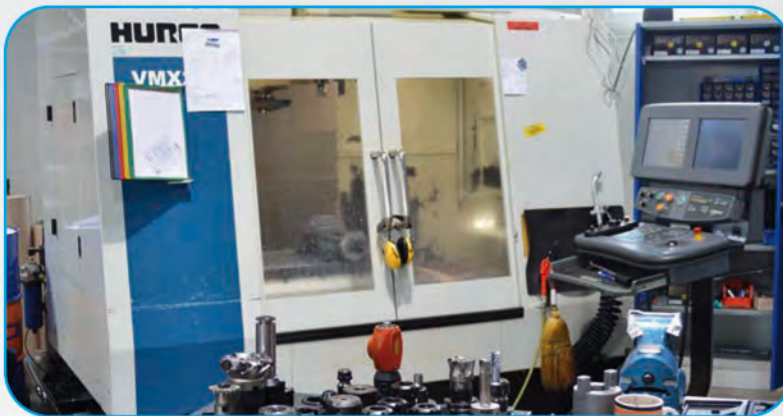
Steriliser designed and manufactured for the Biological Institute. It is designed to supply water onto the trays in the required quantities, run the cycles one by one and/or automatically. Ozone treatment, UV-light treatment, temperature and humidity values.





Pool of existing tools

CNC processing centres:



- 1 Mazak Variaxis I-500, simultaneous 5-axis CNC machining centre
- 2 Hurco VMX-axis CNC machining centre
- 8 Haas (VF2-4) 3+1 axis CNC machining centre
- 1 universal miller

CNC lathes:



- 1 Mazak quick turn 30 CNC Lathe
- 1 HAAS 20Y simultaneous 5-axis CNC lathe
- 1 universal lathe

In addition to the CNC equipment described above we have a grinding shop, tempering ovens, as well as a locksmith and an assembly unit to assist our customers. We manufacture on a total work area of 2,000 m² in two shifts.



CNC electric discharge machines:



- 1 Sodick AQ 750L 5-axis
CNC electric discharge machine
- 1 Charmiles
CNC electric discharge machine
- 2 Fanuc
CNC electric discharge machine

Metrology lab:



- Kreon 7-axis measuring arm with
a working volume of 2.5 m.
- Our metrology lab is equipped with certified measuring tools and the measurement results are recorded in the measurement records. We can also perform measurements on the customers' premises if machinery components or parts cannot be removed from their original locations of operation or from the plant due to their size or due to being used in a continuous production regime.

Heat and surface treatment:



- High capacity tempering ovens for
heat treatment on our own premises.
- Hot blackening tanks for the corrosion
protection of steel parts.



QUALITY PRODUCTION PLANNING

Q.P.P. HUNGARY KFT.

Please do not hesitate to contact our colleagues:

Requests for quotes, manufacturing:

Dávid Szabó /email: info@qpp.hu/Tel.: +36 62 267 444

Suppliers, Quality, Logistics:

Hilda Szabó /email: hilda.szabo@qpp.hu/Mobile: +36 30 528 7660

Invoicing, Accounting, Suppliers:

Mrs. Szabó Hilda Tóth /hilda.szabone@qpp.hu/Mobile: +36 30 249 6826

Premises:

JURA Ipari Park (JURA Industrial Park), H-6750 Algyő

Postal address:

H-6727 Szeged, Gerle utca 19.

Tel.: +36 30 249 6826/

+36 30 528 7660

Fax: +36 62 267 444

info@qpp.hu

www.qpp.hu